

UNIBALL TREE LIGHT + LIP LIGHT

MR16 UNIBALL TREE LIGHT

We all love the beautiful scene that downlighting creates and its ability to transform a good lighting design to stunning. However, we don't really care for the difficulty of working with a tree, mount, and two to three screws while up on a ladder.

Our Uniball Tree Light means one screw and less time (and risk) spent hanging each fixture. Take advantage of this game-changing product that can give you the ultimate stability and flexibility when creating those truly magnificent down-lit designs.

Uniball Tree Light Specifications

Size: 10" long x 3" wide Fixture/Mount,
with 4.5" x .375" diameter Uniball Screw

Construction: Solid Brass

Finish: Vintage Brass

LIP LIGHT

Clean, crisp design is paired with the easy installation and reliable performance that Coastal Source is known for. The Lip Light comes with a patented brass Coastal Mini Connector™ ready to attach our flexible LipZip™ cable - available in 15", 30" & 5' lengths. The integrated CREE LED module is replaceable and available in 1W or 2W (2700K or 3000K). The entire fixture is constructed of 100% brass with a removable mounting bracket increasing its uses for small, hard to light spots such as under railings or up-lighting rafters. The Lip Light is the perfect way to gracefully light your step treads and risers, retaining and seat walls, and accent columns.

Lip Light Specifications

Size: 0.75" high x 3.625" deep x 7.50" wide

Construction: Solid Brass

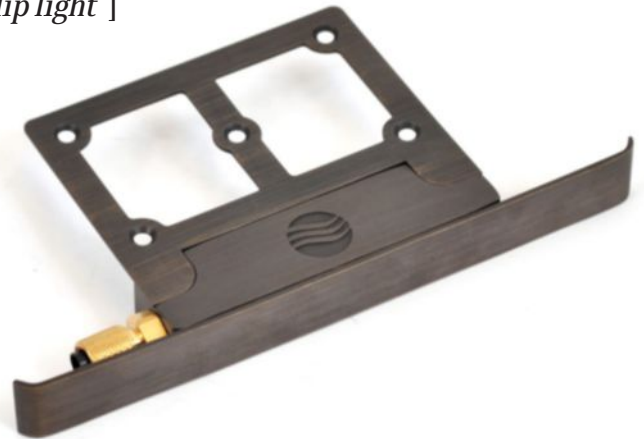
Finish: Beaded Brass, Vintage Brass, Nickel

All Coastal Source products, including the **Uniball Tree Light** and **Lip Light** are designed to **Defy the Elements!**

[*uniball tree light*]



[*lip light*]



HANGING LIGHT + SECURITY TRI-MOUNT

HANGING LIGHT

The Coastal Source Hanging Light is an easy and elegant fixture to create beautiful, natural downlighting. There are a few mounting options such as cable suspended from a tree branch, hard mounted to beams, pergola or any other solid surface with our 1/2" Flush Mount. Easy installation and sleek look.

Hanging Light Specifications

Size: 7.44" high x 2.37" wide

Construction: Solid Brass

Finish: Vintage Brass

Plug+Play cabling system

Accommodates 1.5W to 9W MR-16 Lamps

Attachment holes for safety cables

SECURITY TRI-MOUNT

The Coastal Source Security Tri-Mount solves the age old problem of cheap corroded security soffit lights. In addition, it has the flexibility to handle several applications and configurations such as triple bullet lights, dual bullet lights with a third party motion detector or combinations of bullet lights and bullet speakers. Holds up to three Coastal Source fixtures, or two fixtures and a third-party item.

Security Tri-Mount Specifications

Size: 2.52" high x 4.53" wide

Construction: Solid Brass

Finish: Beaded Brass, Vintage Brass, White

Plug+Play cabling system

Multi component construction for easy installation and assembly.

Mounts to standard 4" electrical boxes

Built in bracket for optional Hatch high voltage to low voltage transformer.

All Coastal Source products, including the **Hanging Light** and **Security Tri-Mount** are designed to **Defy the Elements!**[™]

[*hanging light*]



[*security tri-mount*]

