



**ColorVu G2**

**Illuminating Darkness with  
24/7 Vivid Full Color Imaging  
for Enhanced Safety  
and Reduced Risk**

**HIKVISION®**

# Full Color Details at Night with Human & Vehicle Detection

Capturing only black and white surveillance footage at night used to be standard. Hikvision's ColorVu technology changes the game by delivering full color at night, without additional lighting or equipment, to ensure clear views and full surveillance coverage around the clock.

ColorVu second generation (G2) cameras improve image quality, delivering crisp, full color images and video. G2 models are equipped with AcuSense features to provide full color 24/7 with more accurate detection of humans and vehicles to reduce false alarms.

Innovative ColorVu technology enhances details in full color to assist in reviewing forensic details for incidents that occur at night. Previously with traditional IR cameras you could only describe a suspect's clothing or vehicle color as light or dark when speaking to law enforcement. Using ColorVu cameras, you'll have full visibility into the precise color of a suspect's clothing or vehicle, even in complete darkness.

## ColorVu offers a wide array of benefits:

- Full color, detailed images day and night with clarity to assist with accurate identification of suspects and vehicles.
- Illuminates poorly lit areas 24/7 to boost safety in dark walkways, buildings, and campuses.



### LARGE APERTURE

- f/1.0 super aperture collects more light to produce brighter images
- 4x amount of light of conventional cameras
- Includes BBAR coating, ED Optical glass

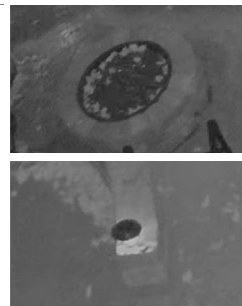
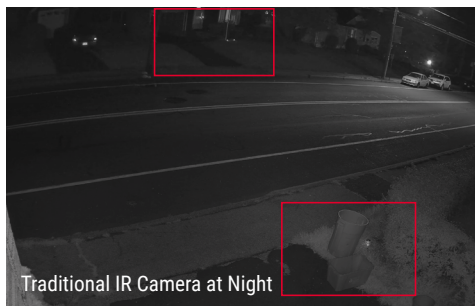
### SUPPLEMENTAL LIGHT

- Eco-friendly, warm supplemental lighting adjustable from 0-100 illumination
- Anti-glare diffusion lens (TurboHD)

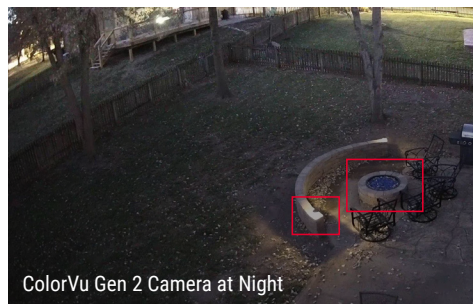
### ADVANCED SENSOR

The IP advanced sensor is enhanced with backside illumination (BSI) and the TurboHD model includes frontside illumination (FSI) technology. All cameras include self-adaptive 3D Digital Noise Reduction to remove noise from the image and ensure high quality, full motion video and imaging.

## Traditional IR Camera at Night:



## ColorVu Gen 2 Camera at Night:



# ColorVu G2 Featuring AcuSense: 2 Feature Sets, 1 Camera!

- ColorVu G2 cameras are equipped with our 2nd Generation AcuSense algorithm for precise human and vehicle filtering that reduces false alarms up to 90 percent, improving productivity and alarm handling efficiency.
- The AcuSense algorithm offer multiple benefits. It enables you to reduce time responding to false alarms and non-threatening events, and less time searching video, by providing faster and more accurate intrusion detection.
- Vastly reduces overall operating costs by providing accurate alarm data for security personnel to respond to and evaluate.
- Lowers time and cost by enabling more efficient incident response and reducing false alarm notifications.

## How ColorVu Works:

ColorVu Camera



Conventional Camera



### ColorVu Super-Aperture Lenses:

Unlike conventional lenses, ColorVu lenses:

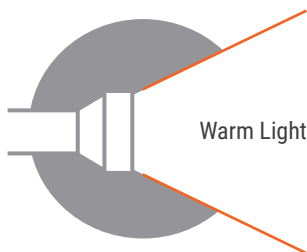
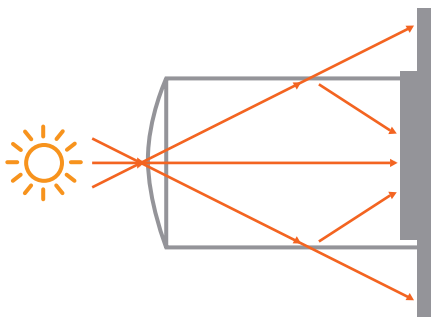
- Are equipped with a wider-than-average super-aperture, reaching up to  $f/1.0$ , which allows more light to enter the lens, increasing image brightness.
- Feature Broadband Anti-Reflection (BBAR) coating and Extra-Low Dispersion (ED) optical glass to reduce light flare and efficiently replicate image sharpness and color saturation. These two technologies—BBAR and ED—effectively overcome blocks to collecting key information that may be hidden by a light flare.

### ColorVu Advanced, High-Sensitivity Sensors:

ColorVu's high-sensitivity sensors are designed for surveillance applications where high resolution color images are required, even in ultra-low light environments. ColorVu sensors efficiently transfer light through its surface to produce a vivid video image, one that nearly mimics the light conditions and details from the original scene.

Unlike conventional sensors, ColorVu sensors:

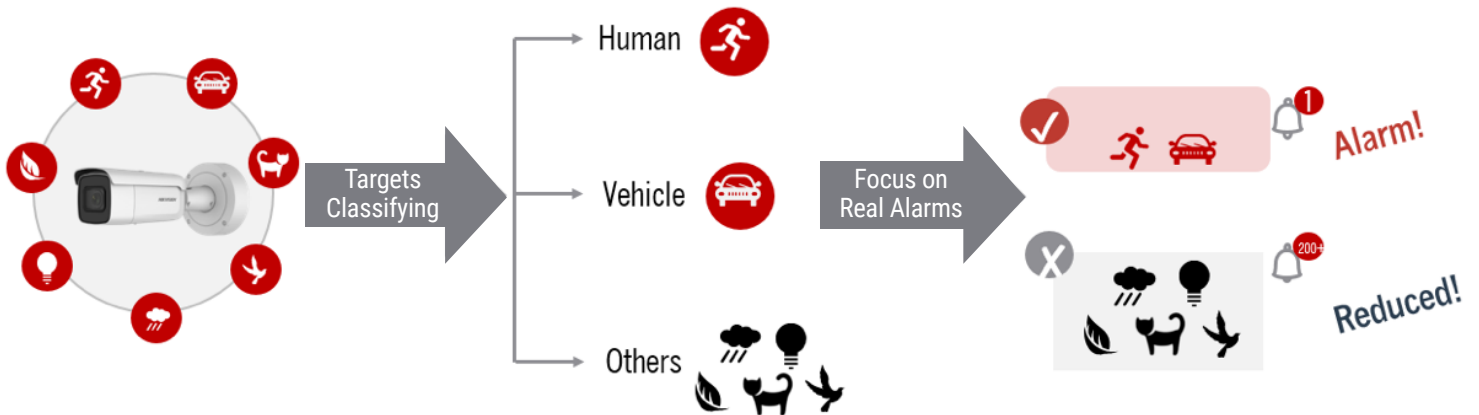
- Employ an advanced sensor technology that vastly improves the utilization of light for better image quality.
- Continually provide colorful, sharp images down to the lowest light levels.
- Deliver self-adapting 3D Digital Noise Reduction (DNR) to remove noise from the image and ensure high quality full motion video and imaging.



### ColorVu Supplemental Lighting:

Equipped with warm supplemental light, so when there is no light source whatsoever—not even starlight or street lights—ColorVu cameras still produce full color video and imaging. In addition, extreme light conditions were taken into consideration during design for the best results in real-world applications. Supplemental lighting provides environmentally-friendly, warm lighting, and reduces harsh discoloration of the scene being illuminated.

## How 2nd Gen AcuSense Works:



### Reduce False Alarms and Enhance Operational Efficiency

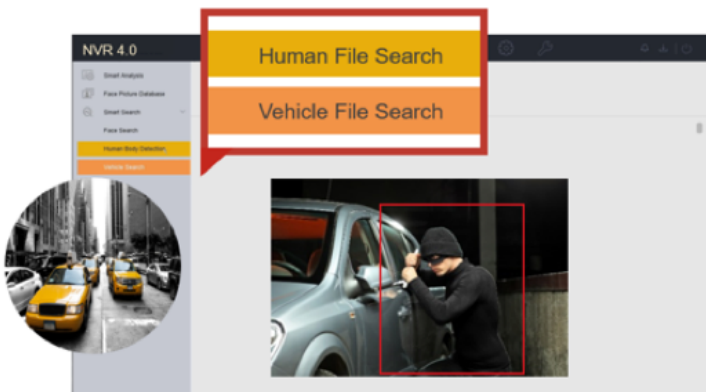
Save time and money spent on non-threatening events with faster and more accurate intrusion detection using AcuSense. By selecting certain targets such as people or vehicles, the AcuSense system can filter out unselected target types to reduce false alarms, shortening time spent on unimportant events and manual video search.

People and vehicles are typically the most important factors to identify in perimeter surveillance. Conventional perimeter security systems generate false alarms when it detects movement of objects such as animals, tree branches, light changes, and even rain. 2nd Gen AcuSense accurately senses and distinguishes human and vehicle movements from other moving objects, reducing false alarms.

### Quick Target Search and Motion Detection 2.0

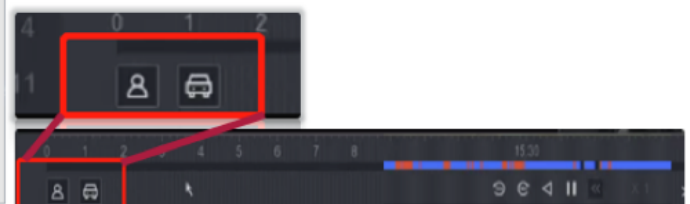
Automatically identify footage of people and vehicles, eliminating the high costs of manual video searches. Video files are pre-sorted into "Human Files" or "Vehicle Files," making it easy to access the video clip you want using these categories and time or location.

### Quick Target Search:



### Motion Detection 2.0

Motion event target type check by human/vehicle



## Protect People & Property:



### Small Business

Monitor entrances and exits as well as dimly-lit interior and exterior areas where theft or assaults could occur, such as dark hallways and walkways, dumpster areas, and loading docks. Better illumination with ColorVu cameras protects your employees, customers and assets, and helps them to feel safe around and within your business.



### Parking Lots

Parking lots are difficult to protect for many reasons. ColorVu supplemental lighting makes them easier to secure and means there is no need for additional lighting to capture high-quality, full color images. ColorVu's eco-friendly, warm lighting does not interfere with drivers' vision. All these features save money and ensure high resolution, detailed imagery—such as the color of a person's clothing or the color of a car—are recorded for forensic review.



### Residential








Residential buildings such as condominiums and townhouse complexes often have several low-light areas that become potentially risky and difficult to navigate in darkness, such as walkways, stairwells and other public areas. ColorVu provides unmatched surveillance where incidents might occur, and illuminates areas to reduce risk and improve safety for tenants and visitors in areas where incidents or accidents could occur. Better quality imagery improves ease of suspect identification if an incident occurs, and provides a safer environment for tenants and visitors.



### Parks and Recreation Areas

Strategically placed ColorVu cameras can illuminate areas that pose a risk for accidents or other incidents with limited lighting such as walkways, play areas, entrances to restroom areas and exercise areas. Better illumination keeps the community safe and comfortable in public areas.

# ColorVu G2

KEY FEATURE	<ul style="list-style-type: none"> <li>• 24/7 Color Imaging Technology</li> <li>• Advanced Sensor &amp; Super Aperture f1.0</li> <li>• Integrated Supplemental White Light</li> <li>• G2 Models Support 2nd Generation AcuSense</li> </ul>						
RESOLUTION	4 MP / 8 MP						
FORM FACTOR	Bullet / Dome / Turret / Long Bullet						
PRODUCT MODEL	IMAGE	LENS	RESOLUTION	FPS	IMAGE SENSOR	APERTURE	AUDIO
DS-2CD2347G2-LU (TURRET)		2.8mm	4 MP 2688 x 1520	30	1/2.8"	0.0035 Lux@f/1.0	Built-in Mic
		4mm					
DS-2CD2147G2-SU (FIXED DOME) *NO SUPPLEMENTAL LIGHT		2.8mm	4 MP 2688 x 1520	25	1/1.8"	0.0014 Lux@f/1.0	Built-in Mic Audio I/O
		4mm					
		6mm					
DS-2CD2047G2-LU (FIXED BULLET)		2.8mm	4 MP 2688 x 1520	30	1/2.8"	0.0035 Lux@f/1.0	Built-in Mic
		4mm					
DS-2CD2087G2-L (FIXED BULLET)		2.8mm	8 MP / 4K 3840 x 2160	30	1/1.8"	0.0014 Lux@f/1.0	NA
		4mm					
DS-2CD2T47G2-L (FIXED LONG BULLET)		2.8mm	4 MP 2688 x 1520	30	1/2.8"	0.0035 Lux@f/1.0	NA
		4mm					
DS-2CD2747G2-LZS (DOME VARIFOVAL)		2.8mm	4 MP 2688 x 1520	30	1/1.8"	0.0014 Lux@f/1.0	Audio I/O
		4mm					
DS-2CD2647G2-LZS (BULLET VARIFOVAL)		2.8mm	4 MP 2688 x 1520	30	1/2.8"	0.0035 Lux@f/1.0	Audio I/O
		4mm					
		6mm					
WDR	130dB True WDR						
HUMAN/VEHICLE DETECTION	✓						
VCA	REGION ENTRANCE DETECTION	✓					
	REGION EXITING DETECTION	✓					
	SCENE CHANGE	✓					
	FACE DETECTION	✓					



# Contact

## TECHNICAL SUPPORT

Hikvision USA

Phone: +1-909-895-0400

Toll-free: +1-866-200-6690

Email: [techsupport.usa@hikvision.com](mailto:techsupport.usa@hikvision.com)

Hikvision Canada

Toll-free: +1-866-200-6690

Email: [techsupport.ca@hikvision.com](mailto:techsupport.ca@hikvision.com)

## LEARNING & DEVELOPMENT

Online: [hikvisionlearning.com](http://hikvisionlearning.com)

## DEALER PARTNERS

Email: [partners.usa@hikvision.com](mailto:partners.usa@hikvision.com)

Hikvision USA Inc.  
18639 Railroad Street  
City of Industry, CA 91748

Hikvision Canada Inc.  
4848 Levy Street  
Saint-Laurent, Quebec H4R 2P1

Contact Information  
Toll-Free: +1 866-200-6690 (U.S. and Canada)  
Phone: +1 909-895-0400  
Email: [verticals.usa@hikvision.com](mailto:verticals.usa@hikvision.com)  
[hikvision.com](http://hikvision.com)

Connect with us: [!\[\]\(9db214d549b9aeebe72aa11d3a5c4b1a\_img.jpg\)](#) [!\[\]\(eb8853aebcf89ad94621954ad378a7e4\_img.jpg\)](#) [!\[\]\(04e111601f4d77245b54c41c5c61e752\_img.jpg\)](#) [!\[\]\(3124ccd2c7982661ce9c869808c9b16b\_img.jpg\)](#) [!\[\]\(865f0b08c7e39caccb838a35d8e5e81b\_img.jpg\)](#)

©2021 Hikvision USA Inc. and Hikvision Canada Inc. All rights reserved. Hikvision is a registered trademark of Hikvision Digital Technology Co., Ltd. in the US, Canada and other countries. All other trademarks, service marks, and product or service names are trademarks or registered trademarks of their respective owners. Product specifications and availability are subject to change without Notice.